

# ELITE FLAG HINGE

## Fitting Instructions

### Hinge Part Numbers:

EFH-19... = 19mm Step Height  
EFH-22... = 22mm Step Height

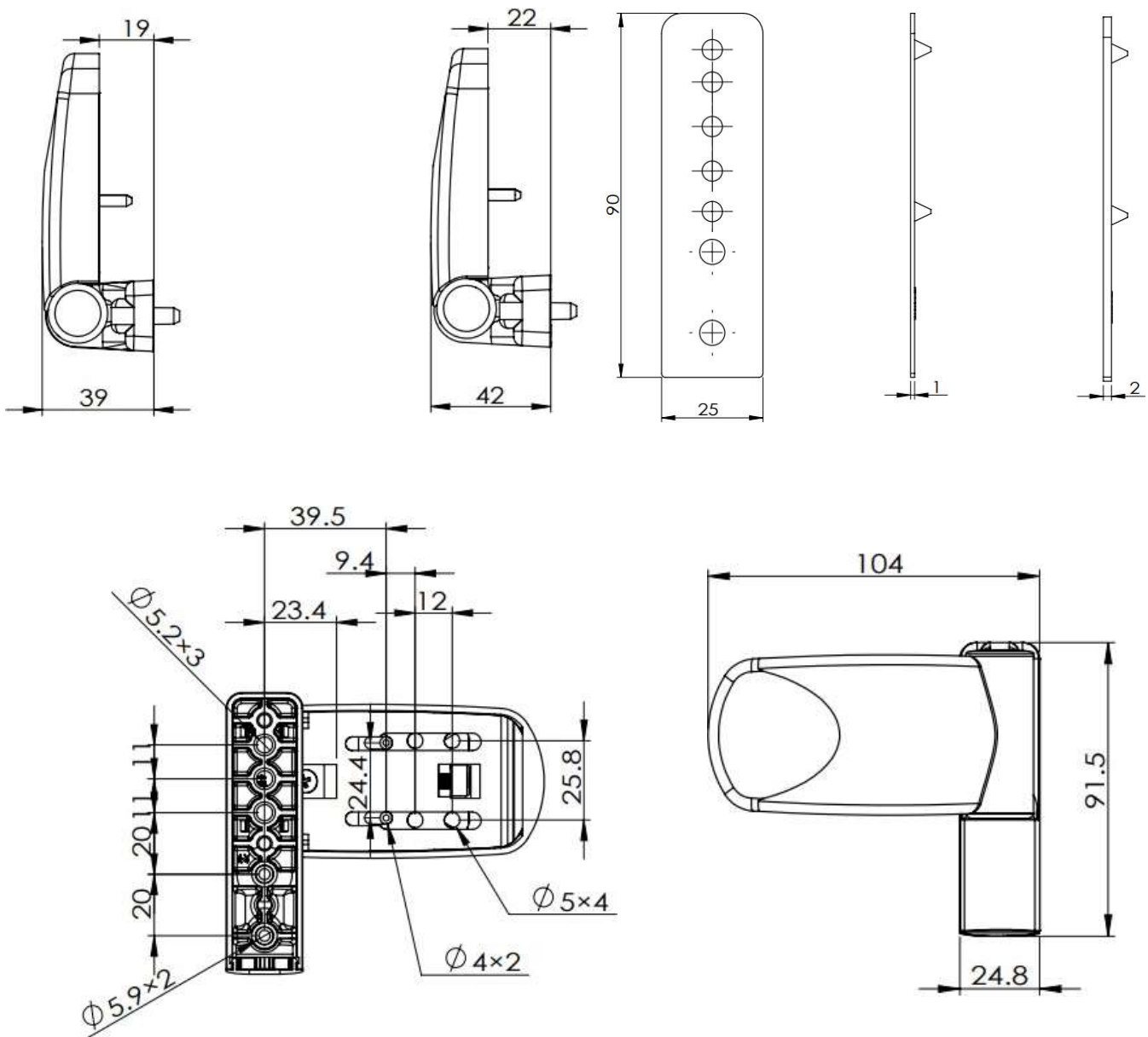
### Shim Part Numbers:

EFH—P1 = 1mm Height  
EFH—P2 = 2mm Height

### Jig Part Number:

Jig-0036

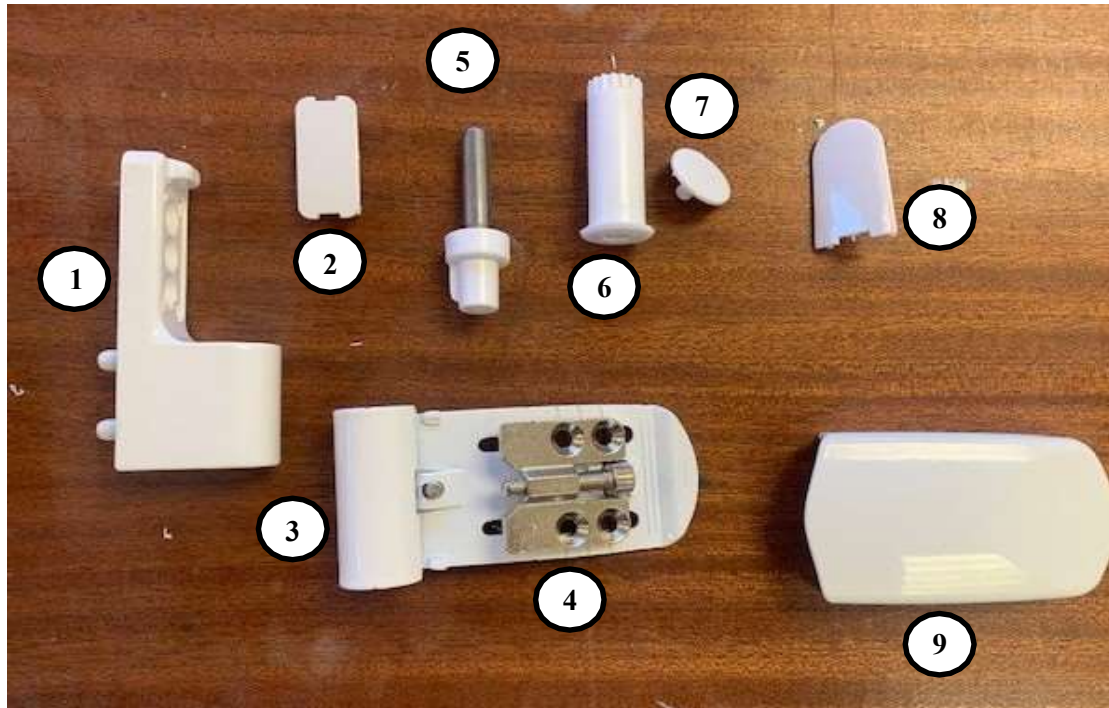
### Dimensional Data:



## Fitting Preparation



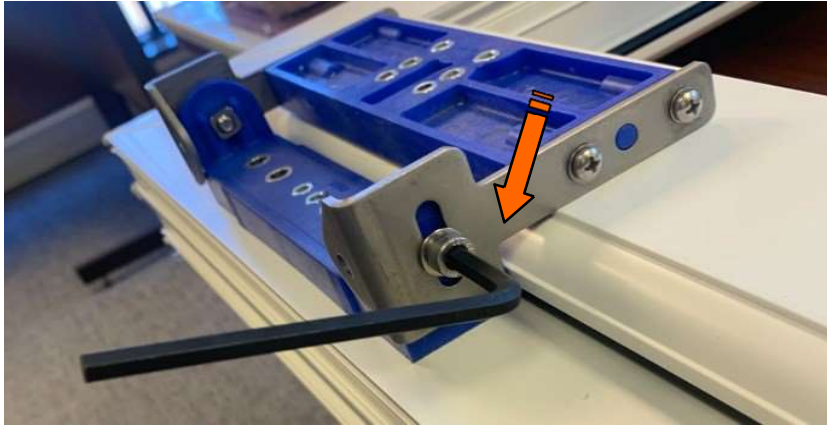
**De-box  
De-bag components  
Layout in preparation  
for fitting**



**Key:**

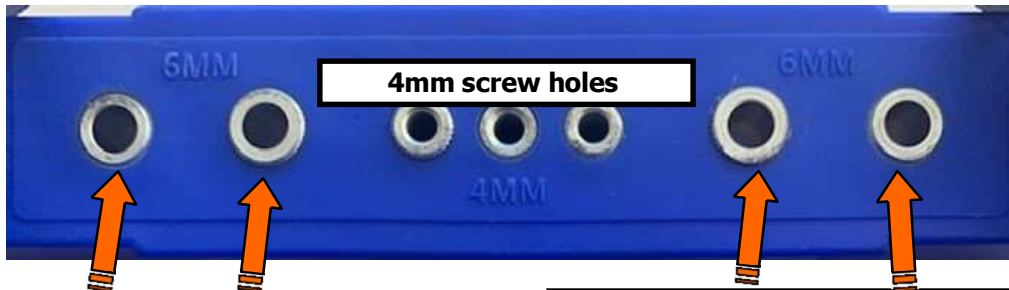
- 1 Hinge Base**
- 2 Hinge Base Screw Cover**
- 3 Sash Plate**
- 4 Sash Carriage Plate**
- 5 Pivot Pin**
- 6 Hinge Centre Bush**
- 7 Hinge Top Cap**
- 8 Hinge Base Cap**
- 9 Hinge Cover**

## Drilling Preparation



Adjust step height of jig by sliding frame block down until it sits on frame - tighten with 5mm Allen key

### Door - Frame Side Prep



2 x 6mm Base Pin Locations - LH

2 x 6mm Base Pin Locations - RH



#### For 6mm Base Location Pins:

Using a Ø6.0mm drill bit, drill through the skin of the profile only, at the base pin locations as shown above and as marked on jig.

Note: only drill left or right-hand pin locations as required when drilling the frame side. If using drill point screws continue to pilot the remainder of the holes as required.

#### For 4mm Base Screw Holes:

**Note: If using drill point screws pilot holes may not be required (all depending on profile reinforcing).**

### Prep Detail



#### For 4mm Base Screw Holes:

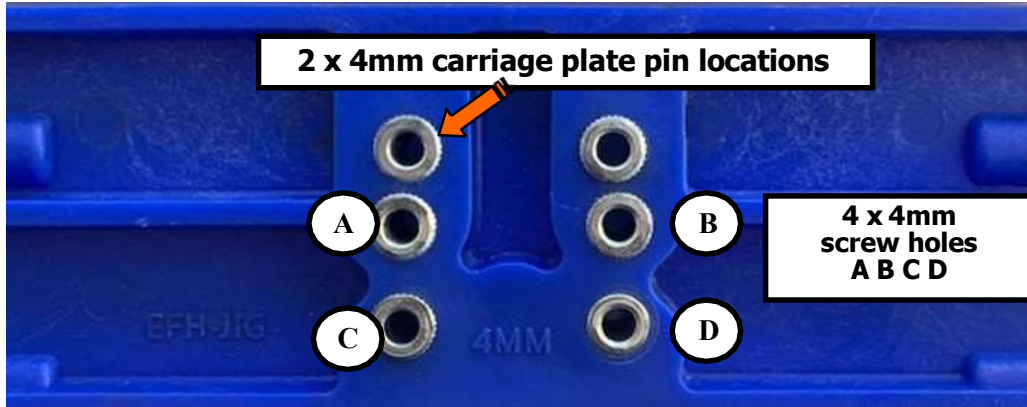
**Note: If using drill point screws pilot holes may not be required. Screw in screws using applied pressure as required (all depending on profile reinforcing).**

If profile reinforcing requires drilling, use a Ø4.0mm drill. Drill through the skin of the profile only. 3 x screw hole locations as shown above and as marked on jig.

- Jig is symmetrical and can be used for either hand as required.
- Recommended screw size Ø4.8mm select suitable screw type for the reinforcing being used.

## Drilling Preparation

### Door - Sash Side Prep



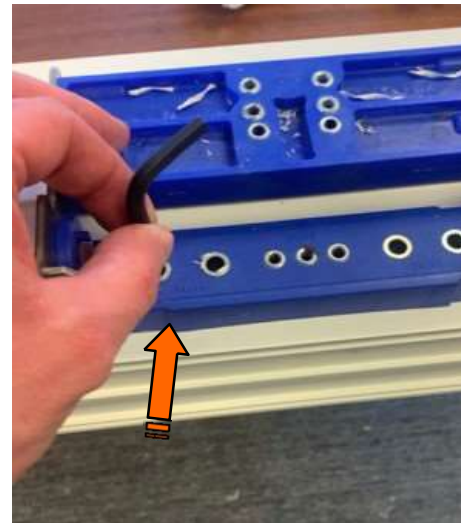
#### For 4mm carriage plate pin location holes

Using a Ø4.0mm drill bit, drill through the skin of the profile only, at the carriage plate pin locations as shown on the above prep photo and as marked on jig. Continue to pilot the remaining screw holes as required.

#### For 4mm Base Screw Holes:

**Note: If using drill point screws pilot holes may not be required (all depending on profile reinforcing)**

Recommended screw size Ø4.8mm – select suitable screw type for the reinforcing being used.



**\* Tip - Use a 6mm Allen key as a location peg in the upper base location pin hole of the jig will allow for more accurate alignment when drilling carriage plate pin holes.**

## Fitting Hinge Base

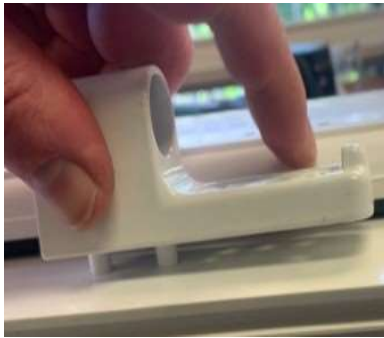


Hinge Base



1mm/2mm Packers Available

1



Fit hinge base onto door frame prep

2



Secure hinge base to the door frame using 3 x (see recommended screws) Ø4.8mm screws.

3



Fit screw cap cover into Hinge Base

## Inserting Pivot Pin



Hinge Pivot Pin



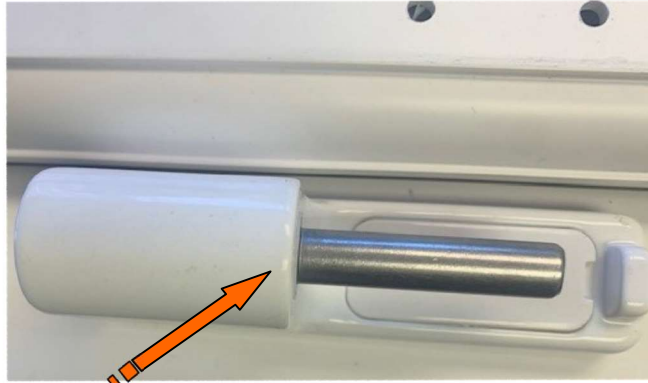
Location Rib

4



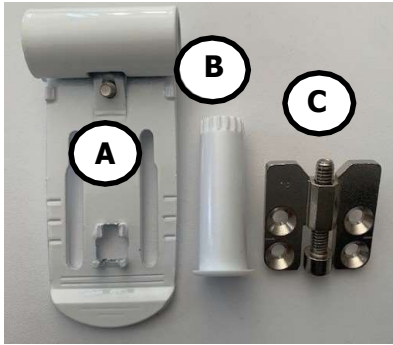
Insert the Pivot Pin into the base component, locating the rib into the slot in the pocket.

5



Push/lightly tap pin into position, ensuring pin shoulder sits flush with hinge base.

## Sash Plate Fitting



- A) Steel Sash Plate
- B) Centre Bush
- C) Carriage Plate

6



Ensure 4 vent holes are at the top of the bush (towards you). Hinge compression is now set to **OFF**.

7



Ensure 4 vent holes are at the top of the bush (towards you). Hinge compression is now set to **OFF**.

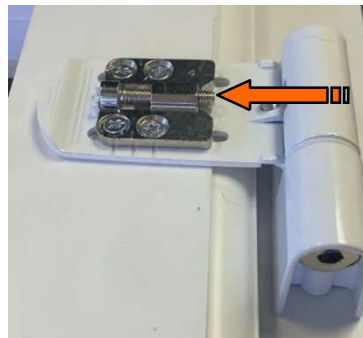
8



Insert carriage plate into steel sash plate, pushing location pins into sash plate prep as shown.



9



Fix both the carriage and the steel sash plate using 4 x Ø4.8mm screws (see recommended screws sizes).

## Fitting The Hinge Cover



Sash Plate Location Lugs x 2



Cover Location Lug Slots x 2

10



Place the hinge cover over the steel sash plate and carriage plate sliding into place and locating onto sash plate location lugs.

**\* Ensure that the hinge cover is retained\***

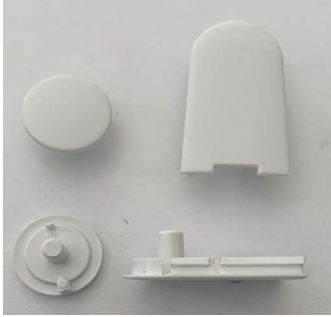
11



Open the door assembly and secure the hinge cover in place by tightening the cover retaining screw.



## Cover Caps



Top & Bottom Caps

12



Clip in the bottom cap, ensuring that the raised post slots into hex slot on height adjustment cam.

13



Clip in the top cap, ensuring that the location lug slots into the sash plate slot as shown.

14

