



Exclusively from DGS,
Elite 3D Flag Door
Hinge

ELITE 3D FLAG DOOR HINGE

Ergonomically designed to suit PVC-U door profiles and fully 3D adjustable.

Features:

1. Part of the Elite Suited Window and Door Furniture range.
2. Can achieve PAS24 accreditation as part of a complete door assembly.
3. Steel / Stainless Steel sash plate for superior strength.
4. Cycle tested to 100,000 cycles, conforms to BS EN119.
5. 3D Independent vertical, lateral and compression adjustment.
6. Corrosion tested to BS EN 1670: Grade 5 painted finishes and Grade 4 plated finishes.
7. 10 year mechanical guarantee.
8. Available in 19mm and 22mm height options, variety of hinge packers available.

For more information please visit the website:



Patented Solutions

Patent pending "Anti-lift" security feature, with a 2.5mm steel carriage plate offering enhanced performance and security.

Colour Range

Anthracite
Grey



White



Champagne
Gold



Gold



Smokey
Chrome



Oak



Silver



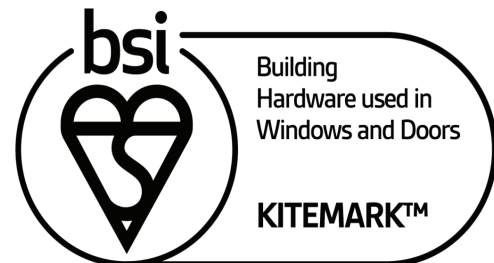
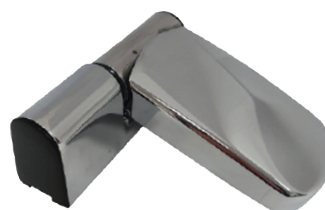
Black



Brown



Chrome



KM 719295
BS6375 parts 1, 2 and 3





Head Office (Derby)
T: 01332 811611
E: sales@dsgsgroup.co.uk

Glasgow Branch
T: 0141 9523758
E: glasgow@dsgsgroup.co.uk

Newcastle Branch
T: 0191 4690988
E: newcastle@dsgsgroup.co.uk

Leeds Branch
T: 0113 2526313
E: leeds@dsgsgroup.co.uk

Caldicot Branch
T: 01291 430727
E: southwest@dsgsgroup.co.uk

Swansea Branch
T: 01792 700555
E: swansea@dsgsgroup.co.uk

Exeter Branch
T: 01392 824129
E: exeter@dsgsgroup.co.uk

Maidenhead Branch
T: 01628 784971
E: southern@dsgsgroup.co.uk

Brentwood Branch
T: 01277 218072
E: brentwood@dsgsgroup.co.uk

Belfast Branch
T: 028 9077 2477
E: belfast@dsgsgroup.co.uk

DGS Ireland Ltd (Dublin)
T: 01 626 1055
E: dublin@dsgsgroup.co.uk

DGS Group Plc. Branch Network

